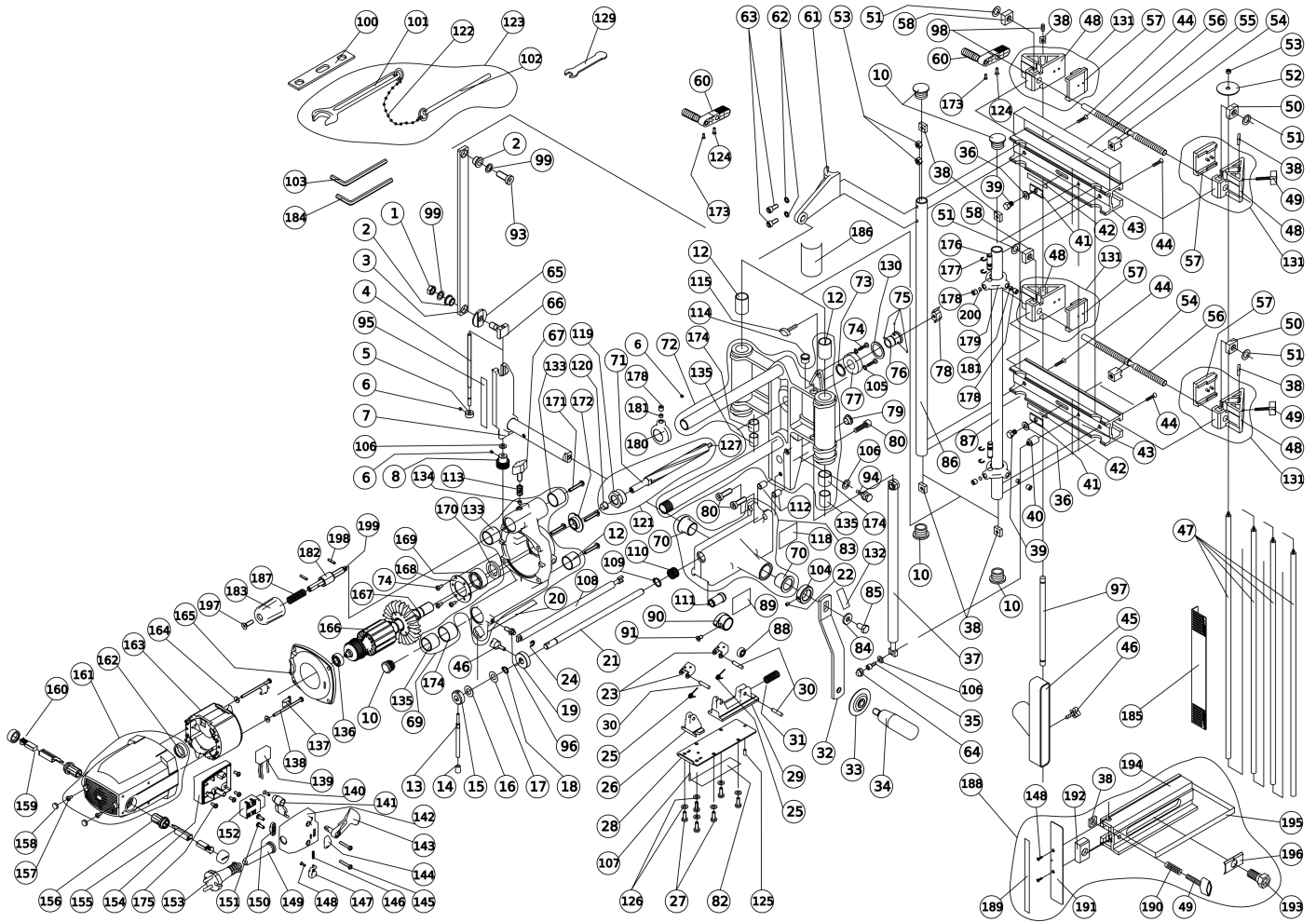




Technical information
Explosion drawing and parts list

FC116U (1600395) FC116U LOCK MORTISER 120V USA | Version A (From serial number 190030)





Technical information
Explosion drawing and parts list

FC116U (1600395) FC116U LOCK MORTISER 120V USA | Version A (From serial number 190030)

Pos.	Serial No.	Code	Description	Quantity
1		1322078	LOCK NUT	1
2		9512001	SELF LUBRICATED BEARING B-10X14X10/18X2	2
3		1623225	ROD	1
4		1622222	REGULATOR	1
5		1622224	RING	1
6		1675085	HEX. SOCKET SET SCREW M.4X5	3
7		1606509	CRANKSHAFT (V2)	1
8		1622225	KNOB	1
10		1699139	COVER	5
12		1612058	SELF LUBRICATED BEARING 22X25X20	1
13		1622231	ROD	1
14		2904079	PROTECTOR	1
15		1622233	RING	1
16		6683015	BELLEVILLE WASHER D.10.2X20	1
17		9580005	WASHER D.10.2X20X0.26	1
18		1688103	RING SHAFT D.10	1
19		1622216	RING	1
20		1619213	LABEL	1
21		1622232	SHAFT	1
22		5275049	HEX. SOCKET SET SCREW M.5X6	1
23		1623223	PAWL	2
24		7088010	RETAINING RING D.5	1
25		1626100	SPRING	2
26		1606222	SUPPORT	1
27		3178016	SCREW M.5X15 PH.	6
28		1623212	COVER	1
29		1606223	SUPPORT	1
30		1688102	ROLL PIN D.5X24	3
31		1626101	SPRING	1
32		1623582	HANDLE LEVER (V2)	1
33		1302090	RING	1
34		1699138	KNOB	1
35		7575008	HEX. SOCKET HD. CAP SCREW M.6X25	1
36		1180003	WASHER D.8.4X16X1.6	2
37		1645275	BUFFER	1
38		8385029	NUT M.8	8
39		1622211	REGULATING SCREW	2
40		1622221	COUPLING	1
41		1623213	GUIDE	2
42		1619202	LABEL	2
43		1606216	GUIDE	2
44		9575128	SCREW M.8X15	4



Technical information
Explosion drawing and parts list

FC116U (1600395) FC116U LOCK MORTISER 120V USA | Version A (From serial number 190030)

Pos.	Serial No.	Code	Description	Quantity
45		1606224	NOZZLE	1
46		1025106	KNOB M5X15 mm (CP)	2
47		1622234	ROD	4
48		1606215	CLAMP	4
49		1025105	KNOB M8X35 mm (CG)	3
50		1685034	NUT M.12 (RIGHT)	2
51		1683018	WASHER	4
52		1623217	STOPPER	1
53		2085002	HEX. NUT M.6	3
54		1622214	PIN	2
55		1619592	LABEL	1
56		1622210	SHAFT	2
57		1604222	PROTECTION	4
58		1685033	NUT M.12 (LEFT)	2
60		1645655	HANDLE ASS'Y	2
61		1606220	SUPPORT	1
62		1383003	WASHER AET D.6.4	2
63		1675045	HEX. SOCKET HD. CAP SCREW M.6X15	2
64		1699143	PROTECTOR	1
65		1622218	LENGHT INDICATOR	1
66		1622219	HINGE	1
67		1025109	KNOB M8X20 mm (CG)	1
69		1645696	MOTOR HOLDER WITH BEARINGS	1
70		1612049	BEARING	2
71		1645612	SPLINE SHAFT (V3)(USA)	1
72		1646386	BODY ASS'Y	1
73		1688100	RING D.20	1
74		8678008	SCREW M.4X10 PH.	2
75		1689044	ROLLER D.3.5X5	3
76		1622230	CENTERING COLLAR	1
77		4610039	BALL BEARING 6004-2RS	1
78		1640179	MORTISING BIT D.1"	1
79		1699140	COVER	1
80		1675088	HEX. SOCKET FLAT HD SCREW M.8X25	3
82		2916119	LABEL	1
83		1645663	LEVER BOX WITH BEARINGS	1
84		1680041	WASHER D.8.2X20X2.5	1
85		9571003	HEX. HD. SCREW M.8X15	1
86		1622213	LEFT COLUMN	1
87		1622212	RIGHT COLUMN	1
88		8510016	BALL BEARING 625-ZZ	1
89		1619204	LABEL	1



Technical information
Explosion drawing and parts list

FC116U (1600395) FC116U LOCK MORTISER 120V USA | Version A (From serial number 190030)

Pos.	Serial No.	Code	Description	Quantity
90		1622223	LEVER	1
91		7573009	FLAT HD. SCREW M.5X10 PH.	1
93		9875080	SCREW M.10x25	1
94		4329035	HANDLE LOCK	1
95		1619205	LABEL	1
96		4329055	PIVOT SCREW	1
97		1622235	ROD	1
98		1675089	HEX. SOCKET SET SCREW M.8X20	1
99		4383009	WASHER D.10.5	2
100		1623221	WRENCH 13/14 10X30	1
101		6099236	WRENCH D.24	1
102		6027022	ROLL PIN D.6	1
103		6699025	HEXAGON BAR WRENCH 5 mm	1
104		1622237	STOPPER	1
105		1680026	WASHER D.4.3X9X0.8	2
106		4380001	WASHER D.6X12X1.2	3
107		6488051	SPRING PIN D.2X15	1
108		1645266	BUFFER	1
109		1688101	RING SHAFT D.14	1
110		1626103	SPRING	1
111		1622239	SHAFT	1
112		1622236	CENTERING COLLAR	2
113		7226070	SPRING	1
114		1699144	PROTECTOR	1
115		1025104	KNOB M6X25 mm (CG)	1
118		1619225	LABEL	1
119		6027107	COLLET NUT	1
120		1627109	CHUCK COLLET D.10	1
121		1645613	SPLINE SHAFT (MODIFICATION KIT)	1
122		1189001	WRENCH CHAIN	1
123		6000064		1
124		7278010	SCREW M.5X15	2
125		1688105	ROLL PIN D.4X12	1
126		2280004	WASHER D.5.2X11.1X0.7	6
127		1622326	1/4 BIT ADAPTOR	1
129		1299238	SPANNER 11	1
130		4680057	WASHER D.20.2X37X0.2	1
131		1645529	CLAMP WITH PROTECTION	4
132		1619414	LABEL	1
133		1612058	SELF LUBICATED BEARING 22X25X20	1
134		1622631	BLOCK	1
135		1612058	SELF LUBICATED BEARING 22X25X20	2



Technical information
Explosion drawing and parts list

FC116U (1600395) FC116U LOCK MORTISER 120V USA | Version A (From serial number 190030)

Pos.	Serial No.	Code	Description	Quantity
136		1910002	BALL BEARING 608-ZZ	1
137		9502443	WIRE PROTECTOR	2
138		3070045	PAN HD. TAPPING SCREW 8X67	2
139		9868221	CAPACITOR	1
140		7070023	FLAT HD. TAPPING SCREW 6X1/2 PH.BZ.	1
141		6602504	COUNTER-LEVER	1
142		6602676	SWITCH BOX (V2)	1
143		6602503	SWITCH LEVER	1
144		6602364	SWITCH SAFETY	1
145		1779027	SCREW D.4X30 (TX)	2
146		6626124	SPRING	1
147		1602363	OPERATOR	1
148		4370046	PAN HD. TAPPING SCREW 4X3/8 PH.B.	2
149		8002043	CORD ARMOR	1
150		4302025	CORD CLAMP	1
151		1970001	PAN HD. TAPPING SCREW 8X1/2 PH.B.	2
152		1715064	SWITCH	1
153		1400051	CORD ASS'Y (120V)	1
154		6602677	SWITCH BOX SPACE (V2)	1
155		6018007	BRUSH HOLDER	2
156		6018008	BRUSH HOLDER	2
157		6478001	SCREW M.4X8 PH.	2
158		9502254	SCREW CAP	2
159		2417021	CARBON BRUSHES SET	1
160		6018011	BRUSH CAP	2
161		6602687	HOUSING	1
162		2404188	BUSHING D.22	1
163		1655185	STATOR ASS'Y 110V	1
164		9581010	TOOTHED WASHER D.4	2
165		1602586	DEFLECTOR	1
166		1651192	ARMATURE ASS'Y 110V	1
167		6088024	RETAINING RING SW-17	1
168		2033031	RETAINER	1
169		2710020	BALL BEARING 6003-ZZ	1
170		2733072	FELT PACKING	1
171		5379025	SCREW D.5X30	4
172		2722077	LOCK NUT	1
173		7278007	SCREW M.4X12 PH.	2
174		1612059	CILINDRICAL BEARING 25X28X20	2
175		4679014	SCREW D.4X10 TX	4
176		1622630	STOPPER	2
177		1688162	O-RING D.8	4



Technical information
Explosion drawing and parts list

FC116U (1600395) FC116U LOCK MORTISER 120V USA | Version A (From serial number 190030)

Pos.	Serial No.	Code	Description	Quantity
178		9075022	HEX. SOCKET SET SCREW M.8X8	5
179		1606597	STOPPER	2
180		1606598	DEPTH STOPPER	1
181		1622631	BLOCK	2
182		1622634	NUT	1
183		1602777	KNOB	1
184		3499097	ALLEN KEY 4 mm	1
185		1623815	TEMPLATE	1
186		1619588	LABEL	1
187		4826028	SPRING	1
188		1645288	DRILLING ACCESSORY UT16I	1
189		1619224	SCALE	1
190		7226068	SPRING	1
191		1623234	PLATE	1
192		1621225	NUT	1
193		1621224	BUSHING	1
194		1606234	GUIDE	1
195		1619223	LABEL	1
196		1623233	INDEX PLATE	1
197		3873004	FLAT HD. SCREW M.6X16	1
198		9088006	SPRING PIN D.3X16	2
199		1622633	SPINDLE	1
200		1623840	DISC D.6X2	2